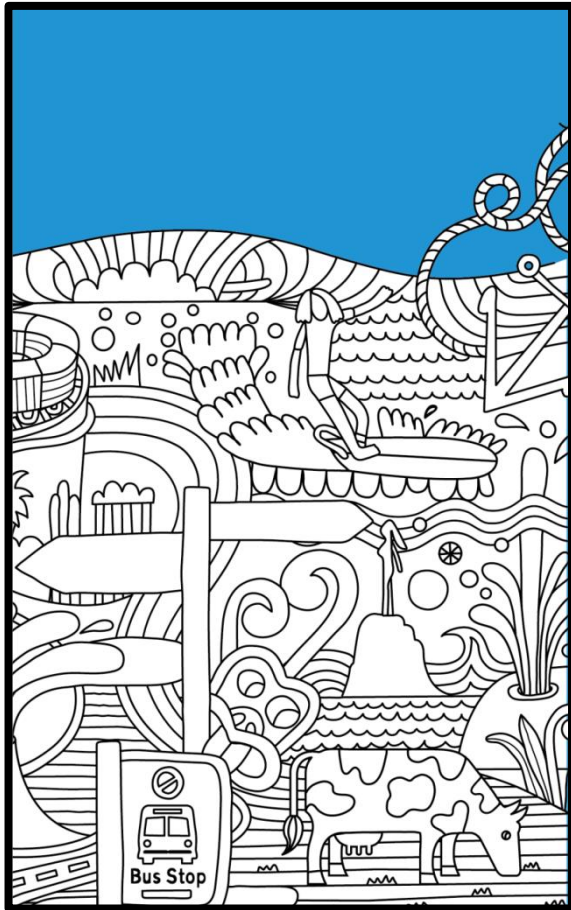




Eastern Bay bus timetable

From July 2023



www.baybus.co.nz

0800 4 BAY BUS (0800 4 229 28)

Version 7 – Updated July 2023 for changes to Fares and Concession information.

Version 6 – Updated September 2022 for updates to Tauranga City routes

Version 5 – updated December 2021 for new bus stop at The Hub Whakatane

Version 4 – updated November 2020 for Bee card \$5 rule change by BOPRC

Version 3: Updated July 2020 for new routes and timetables by BOPRC.

Version 2: Adapted in 2019 by Bay of Plenty Regional Council Sustainable Transport Officer.

Version 1: Adapted in 2017 by Accessible Format Production, the Royal New Zealand Foundation of the Blind, Auckland.

Original print version: Bayhopper Eastern Bay bus timetable brochure.

Total large print pages: 30

The main text is Arial, 18 pt

Adaptations and Omissions

Adaptations include reformatting of tables for large print purposes and keys for abbreviations. The map showing the bus routes has been omitted. Route descriptions follow each timetable.

www.baybus.co.nz

0800 4 BAY BUS (0800 4 229 28)

The Bayhopper network is provided by the Bay of Plenty Regional Council.

www.baybus.co.nz

0800 4 BAY BUS (0800 4 229 28)

Table of Contents

Route	Description	Page
	Bayhopper Eastern Bay Fare Information	4
	Key to Abbreviations	17
122	Whakatāne – Ōhope via Awatapu & Whakatāne Hospital	18
131	Whakatāne – Matatā	19
135	Whakatāne – Kawerau	20
143a	Whakatāne – Tauranga via Paengaroa and Te Puke	21
143b	Whakatāne – Tauranga via Paengaroa and Te Puke	24
147	Whakatāne – Ōpōtiki	27
150	Potaka - Ōpōtiki	29

Bayhopper Eastern Bay

122 Whakatāne - Ōhope Fares

One way fare	Adult		Child / Youth		Youth+ / Community Connect **		Concession: Tertiary, Senior, SuperGold before 9am	
	Cash	Bee Card	Cash	Bee Card *	Cash	Bee Card	Cash	Bee Card
Within Whakatāne (including Ōhope)	\$3.40	\$2.72	\$2.00	Free	-	\$1.36	\$2.00	\$1.60

131 Whakatāne - Matatā Fares

	Matatā	Whakatāne
Zone	Cash	Cash
Adult Fares		
Matatā (including Edgecumbe and Awakeri)	\$3.40	\$4.40
Whakatāne	\$4.40	\$3.40
Child / Youth Fares		
Matatā (including Edgecumbe and Awakeri)	Free	Free
Whakatāne	Free	Free
Youth+ / Community Connect Fares		
Matatā (including Edgecumbe and Awakeri)	\$1.70	\$2.20

Whakatāne	\$2.20	\$1.70
Concession: Tertiary, Senior, SuperGold before 9am		
Matatā (including Edgecumbe and Awakeri)	\$2.00	\$2.60
Whakatāne	\$2.60	\$2.00

Bee cards cannot be used on this service.

135 Whakatāne – Kawerau Fares

	Kawerau Zone		Te Teko/ Edgecumbe/ Awakeri Zone		Whakatāne Zone	
Zone	Cash	Bee Card	Cash	Bee Card	Cash	Bee Card
Adult Fares						
Kawerau	\$3.40	\$3.40	\$4.40	\$4.40	\$7.60	\$7.60
Te Teko/ Edgecumbe/ Awakeri	\$4.40	\$4.40	\$3.40	\$3.40	\$4.40	\$4.40
Whakatāne	\$7.60	\$7.60	\$4.40	\$4.40	\$3.40	\$2.72
Child / Youth Fares *						
Kawerau	\$2.00	Free	\$2.60	Free	\$4.60	Free
Te Teko/ Edgecumbe/ Awakeri	\$2.60	Free	\$2.00	Free	\$2.60	Free
Whakatāne	\$4.60	Free	\$2.60	Free	\$2.00	Free
Youth+ / Community Connect **						
Kawerau	-	\$1.70	-	\$2.20	-	\$3.80
Te Teko/ Edgecumbe/ Awakeri	-	\$2.20	-	\$1.70	-	\$2.20
Whakatāne	-	\$3.80	-	\$2.20	-	\$1.36
Concession: Tertiary, Senior, SuperGold before 9am						
Kawerau	\$2.00	\$2.00	\$2.60	\$2.60	\$4.60	\$4.60
Te Teko/ Edgecumbe/ Awakeri	\$2.60	\$2.60	\$2.00	\$2.00	\$2.60	\$2.60
Whakatāne	\$4.60	\$4.60	\$2.60	\$2.60	\$2.00	\$1.60

This service connects with route **143 Whakatāne – Tauranga**

*** A registered Bee Card must be used to tag on and tag off the bus to travel for free**

**** This Concession is only available with a registered Bee Card**

143a, 143b Whakatane to Tauranga via Pukehina/Paengaroa and Te Puke fares

	Whakatāne Zone		Matatā Zone		Pukehina/ Paengaroa Zone		Maketū/Te Puke Zone		Tauranga Zone	
Zone	Cash	Bee Card	Cash	Bee Card	Cash	Bee Card	Cash	Bee Card	Cash	Bee Card
Adult Fares										
Whakatāne	\$3.40	\$2.72	\$4.40	\$4.40	\$9.10	\$9.10	\$11.00	\$11.00	\$14.50	\$14.50
Matatā	\$4.40	\$4.40	-	-	\$5.00	\$5.00	\$6.80	\$6.80	\$11.60	\$11.60
Pukehina/ Paengaroa	\$9.10	\$9.10	\$5.00	\$5.00	-	-	\$4.20	\$4.20	\$7.60	\$7.60
Maketū/ Te Puke	\$11.00	\$11.00	\$6.80	\$6.80	\$4.20	\$4.20	\$3.40	\$2.72	\$5.70	\$4.56
Tauranga (including Bayfair and Pāpāmoa)	\$14.50	\$14.50	\$11.60	\$11.60	\$7.60	\$7.60	\$5.70	\$4.56	\$3.40	\$2.72
Child / Youth Fares *										
Whakatāne	\$2.00	Free	\$2.60	Free	\$5.50	Free	\$6.60	Free	\$8.70	Free
Matatā	\$2.60	Free	-	-	\$3.00	Free	\$4.10	Free	\$7.00	Free
Pukehina/ Paengaroa	\$5.50	Free	\$3.00	Free	-	-	\$2.50	Free	\$4.60	Free
Maketū/ Te Puke	\$6.60	Free	\$4.10	Free	\$2.50	Free	\$2.00	Free	\$3.40	Free
Tauranga (including Bayfair and Pāpāmoa)	\$8.70	Free	\$7.00	Free	\$4.60	Free	\$3.40	Free	\$2.00	Free
Youth+ / Community Connect **										

Whakatāne	-	\$1.36	-	\$2.20	-	\$4.50	-	\$5.50	-	\$7.20
Matatā	-	\$2.20	-	-	-	\$2.50	-	\$3.40	-	\$5.80
Pukehina/ Paengaroa	-	\$4.50	-	\$2.50	-	-	-	\$2.10	-	\$3.80
Maketū/ Te Puke	-	\$5.50	-	\$3.40	-	\$2.10	-	\$1.36	-	\$2.28
Tauranga (including Bayfair and Pāpāmoa)	-	\$7.20	-	\$5.80	-	\$3.80	-	\$2.28	-	\$1.36
Concession: Tertiary, Senior, SuperGold before 9am										
Whakatāne	\$2.00	\$1.60	\$2.60	\$2.60	\$5.50	\$5.50	\$6.60	\$6.60	\$8.70	\$8.70
Matatā	\$2.60	\$2.60	-	-	\$3.00	\$3.00	\$4.10	\$4.10	\$7.00	\$7.00
Pukehina/ Paengaroa	\$5.50	\$5.50	\$3.00	\$3.00	-	-	\$2.50	\$2.50	\$4.60	\$4.60
Maketū/ Te Puke	\$6.60	\$6.60	\$4.10	\$4.10	\$2.50	\$2.50	\$2.00	\$1.60	\$3.40	\$2.72
Tauranga (including Bayfair and Pāpāmoa)	\$8.70	\$8.70	\$7.00	\$7.00	\$4.60	\$4.60	\$3.40	\$2.72	\$2.00	\$1.60

This service connects with the following routes:

135 Whakatāne – Kawerau (Tuesday and Thursday)

147 Whakatāne – Ōpōtiki (Monday and Wednesday)

*** A registered Bee Card must be used to tag on and tag off the bus to travel for free**

**** This concession is only available with a registered Bee card**

147 Whakatāne – Ōpōtiki Fares

	Ōpōtiki Zone		Kutarere Zone		Waimana Zone		Whakatāne Zone	
Zone	Cash	Bee Card	Cash	Bee Card	Cash	Bee Card	Cash	Bee Card
Adult Fares								
Ōpōtiki	\$3.40	\$3.40	\$3.40	\$3.40	\$5.70	\$5.70	\$9.40	\$9.40
Kutarere	\$3.40	\$3.40	-	-	\$3.40	\$3.40	\$7.60	\$7.60
Waimana	\$5.70	\$5.70	\$3.40	\$3.40	-	-	\$5.70	\$5.70
Whakatāne (including Tāneatua)	\$9.40	\$9.40	\$7.60	\$7.60	\$5.70	\$5.70	\$3.40	\$2.72
Child / Youth Fares *								
Ōpōtiki	\$2.00	Free	\$2.00	Free	\$3.40	Free	\$5.70	Free
Kutarere	\$2.00	Free	-	-	\$2.00	Free	\$4.60	Free
Waimana	\$3.40	Free	\$2.00	Free	-	-	\$3.40	Free
Whakatāne (including Tāneatua)	\$5.70	Free	\$4.60	Free	\$3.40	Free	\$2.00	Free
Youth+ / Community Connect **								
Ōpōtiki	-	\$1.70	-	\$1.70	-	\$2.80	-	\$4.70
Kutarere	-	\$1.70	-	-	-	\$1.70	-	\$3.80
Waimana	-	\$2.80	-	\$1.70	-	-	-	\$2.80
Whakatāne (including Tāneatua)	-	\$4.70	-	\$3.80	-	\$2.80	-	\$1.36
Concession: Tertiary, Senior, SuperGold before 9am								

Ōpōtiki	\$2.00	\$2.00	\$2.00	\$2.00	\$3.40	\$3.40	\$5.70	\$5.70
Kutarere	\$2.00	\$2.00	-	-	\$2.00	\$2.00	\$4.60	\$4.60
Waimana	\$3.40	\$3.40	\$2.00	\$2.00	-	-	\$3.40	\$3.40
Whakatāne (including Tāneatua)	\$5.70	\$5.70	\$4.60	\$4.60	\$3.40	\$3.40	\$2.00	\$1.60

This service connects with route **143 Whakatāne – Tauranga**

*** A registered Bee Card must be used to tag on and tag off the bus to travel for free**

**** This concession is only available with a registered Bee Card**

150 Ōpōtiki – Pōtaka Fares, (either direction)

	Potaka	Whangaparoa	Oruaiti Beach	Waihou Bay	Raukokere	Papatea	Whanarua Bay	Te Kaha	Waiorore	Omaio	Whitianga	Maraenui	Hawai	Torere	Opape	Tirohanga
Standard one way Adult Fare	\$16.60	\$16.00	\$15.00	\$14.70	\$14.00	\$13.00	\$12.00	\$10.00	\$8.40	\$7.80	\$6.60	\$5.00	\$4.00	\$3.50	\$2.50	\$2.50

On all Eastern Bay services

Children under 5	Free
Children aged 5 – 12 years with registered Bee Card	Free
Youth aged 13 – 18 years with a registered Bee Card	Free
Youth plus aged 19 – 24 years with a registered Bee Card	Half adult fare
NZ Supergold off peak travel with a Bee card†	Free
Community Connect with a registered Bee Card	Half adult fare

† All day Saturday, Sunday and public holidays and from 9 am Monday to Friday

Standard Concessions

- Tertiary students (with a valid NZQA registered institution student ID on a Bee card)
- NZ SuperGold card peak-time travel
- Senior 65+

How do I get a concession?

Concessions need to be loaded onto each card. Child, Youth and Youth Plus concessions are loaded automatically when a card is registered at www.beecard.co.nz

Super Gold and Community Services card concessions can be loaded online or at a BOPRC office. Tertiary concessions can be loaded at a BOPRC office or via their tertiary institutes' student services.

Paying for your ride

The Bee Card is a prepaid card which makes travel by bus easier and smarter. Bee Cards cost \$5 and can be purchased online at www.beecard.co.nz, from a BOPRC office or a bus driver. Register your card at www.beecard.co.nz to be eligible for concession fares. You can top your card up online or by cash with your bus driver.

Transfers between buses

When using a Bee Card, transfers between buses are automatically applied. Customers will need to tag on and tag off for each part of the journey; the system will not charge you any extra providing your journey is within the transfer rules.

1. Free transfers between buses apply for two hours from your first tag on to your final tag off.
2. The transfer time between buses can be no more than 30 minutes.
3. You can only have a maximum of two free transfers per journey.

For cash fares:

1. Free transfers between buses apply for one hour from ticket purchase.
2. The transfer time between buses can be no more than 30 minutes.
3. You can only have a maximum of one free transfer per journey.
4. You will need to present your ticket when transferring

to the next bus.

Lost Property

For lost property left on the bus please contact Uzabus Eastern Bay of Plenty on 0800 892 287.

Accessibility

Most buses are fully accessible with space on-board for wheelchairs/prams. Wheelchairs take priority in the dedicated wheelchair space.

Key to abbreviations

AWA	Awatapu Drive – Fronting No. 111
ECR	Edgecumbe College Road
KVR	Kawerau Valley Road
KIS	Kawera Information Centre
MAS	Matatā Arawa Street
OHO	Ōhope Shops
OHT	Ōhope Te Taiawatea Drive
THB	The Hub
TTK	Te Teko
WBS	Whakatāne Boon Street
WHL	Whakatāne Hospital (Stewart Street)
WQS	Whakatāne Quay Street

122 Whakatāne – Ōhope via Awatapu & Whakatāne Hospital

Monday to Saturday (except public holidays)

	WBS	AWA	WHL	OHO	OHT	OHT	OHO	WHL	AWA	WQS	WBS
AM	-	-	-	-	-	7:00	7:10	7:20	-	7:30	7:35
	7:35	7:45	7:50	8:05	8:15	8:15	8:30	8:40	8:45	8:55	9:05
	9:15	9:25	9:30	9:45	9:55	9:55	10:10	10:20	10:25	10:35	10:40
	10:40	10:50	10:55	11:10	11:20	11:20	11:35	11:45	11:50	12:00	12:05
PM	12:05	12:15	12:20	12:35	12:45	12:45	1:00	1:10	1:15	1:25	1:30
	1:55	2:05	2:10	2:25	2:35	2:35	2:50	3:00	3:05	3:15	3:20
	3:35	3:45	3:50	4:05	4:15	4:15	4:30	4:40	4:45	4:55	5:00
	5:20	5:30	5:35	5:50	6:00	6:00	6:15	6:25	6:30	6:40	6:45

From Whakatāne to Ōhope: Quay, Kakahoroa, (New World car park), Buddle, The Strand, Boon, Pyne, McAlister, Domain, King, James, Kowhai, Awatapu, Hinemoa, Stewart, King, Goulstone, Gorge, Ōhope, Pohutukawa, Harbour Te Taiawatea.

From Ōhope to Whakatāne: Harbour, Anne, Ocean, Te Akau, Pohutukawa, Ōhope, Gorge, Goulstone, King, Stewart, Hinemoa, Awatapu, Kowhai, James, King, Domain, McAlister, Bracken, (New World car park), Kakahoroa, Quay.

131 Whakatāne – Matatā

Thursdays only (except public holidays)

	WQS	WBS	WHL	THB	ECR	MAS	MAS	ECR	THB	WHL	WQS	WBS
AM	9:00	9:05	-	9:13	-	9:30	9:30	9:45	9:57	10:00	10:05	10:10
PM	1:00	1:05	1:10	1:13	1:25	1:40	1:40	-	1:57	-	2:05	2:10

AM Route Description

From Whakatāne to Matatā Direct: Quay, The Strand, Kakahoroa, Buddle, The Strand, Boon, Pyne, McAlister, Domain, Landing, The Hub, SH30, Thornton, Arawa.

From Matatā to Whakatāne via Edgecumbe: Arawa, Division, Wilson, Pollen, Matatā, Bridge, Edgecumbe, College, Bridge, Awakeri, SH30, The Hub, Hinemoa, Stewart, King, Domain, McAlister, Bracken, Kakahora, Quay, The Strand, Boon.

PM Route Description

From Whakatāne to Matatā via Edgecumbe: Quay, The Strand, Kakahoroa, Buddle, The Strand, Boon, Pyne, McAlister, Domain, King, Stewart, Hinemoa, The Hub, SH30, Awakeri, Bridge, Edgecumbe, College, Bridge, Matatā, Pollen, St John, Arawa.

From Matatā to Whakatāne Direct: Arawa, Thornton, SH30, The Hub, Landing, Domain, McAlister, Bracken, Kakahoroa, Quay, The Strand, Boon.

135 Kawerau - Whakatāne

Monday, Wednesday, Friday, Saturday (except public holidays)

	KIS	ECR	THB	WHL	WBS	WBS	WHL	THB	ECR	KIS
AM	7:00	7:20	7:47	7:50	8:05	8:10	8:20	8:23	8:50	9:20
	9:40	10:00	10:27	10:30	10:40	10:45	10:55	10:58	11:25	11:55
PM	1:20	1:40	2:07	2:10	2:25	2:30	2:40	2:43	3:10	3:40
	4:00	4:20	4:47	4:50	5:05	5:10	5:20	5:23	5:50	6:10

AM Route Description

From Whakatāne to Kawerau Direct: Quay, The Strand, Boon, Pyne, McAlister, Domain, Landing, The Hub, SH30, Awakeri, Te Teko, SH34/Kawerau, SH34/Tamarangi, River, Fenton Mill, Valley, Tamarangi/SH34, Islington, Plunket.

From Kawerau to Whakatāne via Edgecumbe: Plunket, Onslow, River, SH34/Tamarangi, SH34/Kawerau, SH30, Te Teko, Main, Bridge, College, Edgecumbe, College, Bridge, Awakeri/SH2, SH30, The Hub, Hinemoa, Stewart, King, Domain, McAlister, Strand, Buddle, Kakahoroa, Quay, The Strand, Boon.

PM Route Description

From Whakatāne to Kawerau via Edgecumbe: Quay, The Strand, Boon, Pyne, McAlister, Domain, King, Stewart, Hinemoa, The Hub, SH30, Awakeri, Bridge, College, Bridge, Main, Te Teko, SH30/Te Teko, SH34/Kawerau, SH34/Tamarangi, River, Fenton Mill, Valley, SH34/Tamarangi, Islington, Plunket.

From Kawerau to Whakatāne Direct: Plunket, Onslow, River, SH34/Tamarangi, SH34/Kawerau, SH30/TeTeko, SH30/Awakeri, SH30, The Hub, Landing, Domain, McAlister, Strand, Buddie, Kakahoroa, Quay, The Strand, Boon.

143a Whakatāne – Tauranga via Paengaroa and Te Puke

This service connects with routes:
147 Whakatāne – Ōpōtiki (Monday)

Monday, Tuesday & Friday

AM	
Whakatāne (Quay St)	9:15
Whakatāne (Boon St)	9:30
The Hub	9:38
Matatā (Shops)	9:50
Paengaroa (opposite the Country Store)	10:15
Maketū (Beach Rd next to Maketū Pies)	10:30
Te Puke (Commerce Ln)	10:45
Gravatt Rd (outside Pāpāmoa Plaza)	11:00
Bayfair Farm St – Stand A1	11:10
Tauranga City Wharf St (Stand B)	11:25
Tauranga (Hospital)	11:35
Greerton Cameron Rd)	11:45

PM	
Greerton (Cameron Rd)	1:50
Tauranga (Hospital)	2:00
Tauranga City Wharf St (Stand D)	2:05
Bayfair Farm St Stand B	2:20
Gravatt Rd (outside Pāpāmoa Plaza)	2:30
Te Puke (Commerce Ln)	2:45
Maketū (Beach Rd next to Maketū Pies)	2:55
Paengaroa (opposite the Country Store)	3:10
Matatā (Shops)	3:35
The Hub	3:52
Whakatāne (Quay St)	4:00
Whakatāne (Boon St)	4:05

Route Description

Whakatāne to Tauranga via Paengaroa and Te Puke:

Quay, The Strand, Boon, Pyne, McAlister, Domain, Landing, The Hub, SH 30, Thornton, Arawa, SH 2 West, Wilson Rd South, Wilson Rd North, Little Waihī, Beach, Maketū (bus stop), Little Waihī, Beach, Maketu, Te Puke Hway, King, Commerce, Te Puke, Jocelyn, Jellicoe, Te Puke Hway, Domain, Pāpāmoa Beach, Maranui, Girven, Marlin, Taupō, Farm, Jackson, Bayfair, Girven, Maunganui, Hewletts, SH 2/ Harbour Bridge, Dive Crescent, Harington, Durham St, Tauranga City Wharf St (Stand B), Spring St, Grey St, Elizabeth St, Cameron Rd, Tauranga Hospital, Cameron, Chadwick.

Tauranga to Whakatāne via Te Puke and Paengaroa:

Chadwick, Tauranga Hospital, Cameron Rd, Elizabeth St, Durham St, Tauranga City Wharf St (Stand D), Willow St, Harington St, Dive Crescent, SH 2/Harbour Bridge, Hewletts, Maunganui, Jackson, Bayfair, Girven, Maranui, Pāpāmoa Beach, Domain, Gravatt (outside Pāpāmoa Plaza), Domain, Te Puke Hway, Jellicoe, Jocelyn, Commerce, Te Puke, King, Te Puke Hway, Maketū, Little Waihī, Beach, Maketū (bus stop), Little Waihī, Beach, Wilson Road North, Wilson Road South, SH 2, Arawa, Matatā, Thornton, SH 30, The Hub, Landing, Domain, McAlister, Strand, Buddle, Kakahoroa, Quay, The Strand, Boon.

143b Whakatāne – Tauranga via Pukehina and Te Puke

This service connects with routes:

147 Whakatāne – Ōpōtiki (Wednesday)

Wednesday, Thursday & Saturday

(except public holidays)

AM	
Whakatāne (Quay St)	9:15
Whakatāne (Boon St)	9:30
The Hub	9:38
Matatā (Shops)	9:50
Pukehina	10:15
Maketū (Beach Rd next to Maketū Pies)	10:30
Te Puke (Commerce Ln)	10:45
Gravatt Rd (outside Pāpāmoa Plaza)	11:00
Bayfair Farm St Stand A1	11:10
Tauranga City Wharf St (Stand B)	11:25
Tauranga (Hospital)	11:35
Greerton (Cameron Rd)	11:45

PM	
Greerton (Cameron Rd)	1:50
Tauranga (Hospital)	2:00
Tauranga City Wharf St (Stand D)	2:05
Bayfair Farm St Stand B	2:20
Gravatt Rd (outside Pāpāmoa Plaza)	2:30
Te Puke (Commerce Ln)	2:45
Maketū (Beach Rd next to Maketū Pies)	2:55
Pukehina	3:10
Matatā (Shops)	3:35
The Hub	3:52
Whakatāne (Quay St)	4:00
Whakatāne (Boon St)	4:05

Route Description

Whakatāne to Tauranga via Pukehina and Te Puke:

Quay, The Strand, Boon, Pyne, McAlister, Domain, Landing, The Hub, SH 30, Thornton, Arawa, SH 2 West, Pukehina Beach, Costello, Pukehina Beach, SH2, Wilson Road North, Little Waihī, Beach, Maketū (bus stop), Little Waihī, Beach, Maketū, SH 2, King, Commerce, Te Puke, Jocelyn, Jellicoe, Te Puke Hway, Domain, Gravatt (outside Papamoā Plaza), Domain, Pāpāmoā Beach, Maranui, Girven, Marlin, Taupō, Farm, Jackson, Bayfair, Girven, Maunganui, Hewletts, SH 2/Harbour Bridge, Dive Crescent, Harington, Durham St, Tauranga City Wharf St (Stand B), Spring St, Grey St, Elizabeth St, Cameron Rd, Tauranga Hospital, Cameron, Chadwick.

Tauranga to Whakatāne via Te Puke and Pukehina:

Chadwick, Tauranga Hospital, Cameron Rd, Elizabeth St, Durham St, Tauranga City Wharf St (Stand D), Willow St, Harington St, Dive Crescent, SH 2/Harbour Bridge, Hewletts, Maunganui, Jackson, Bayfair, Girven, Maranui, Pāpāmoā Beach, Domain, Gravatt (outside Pāpāmoā Plaza), Domain, Te Puke Hway, Jellicoe, Jocelyn, Commerce, Te Puke, King, Te Puke Hway, Maketū, Little Waihī, Beach, Maketū (bus stop), Little Waihī, Beach, Wilson Road North, SH 2, Pukehina Beach, Costello, Pukehina Beach, SH2, Arawa, Matatā, Thornton, SH 30, The Hub, Landing, Domain, McAlister, Strand, Buddle, Kakahoroa, Quay, The Strand, Boon.

147 Whakatāne – Ōpōtiki

This service connects with routes:

143 Whakatāne – Tauranga

Whakatāne to Opotiki	AM	PM
Whakatāne (Quay St)	7:05	4:00
Whakatāne (Boon St)	7:10	4:15
Whakatāne Hospital	-	4:23
Morrison Road (Tāneatua)	-	4:35
Waimana (General Store)	-	4:50
Pohutakawa Ave (Ōhope Petrol Station)	7:15	-
Kutarere	7:35	5:05
Bridge Street Café (Ōpōtiki)	7:50	5:20
Moody Place (Ōpōtiki)	8:00	5:25

Ōpōtiki to Whakatāne	AM	PM
Moody Place (Ōpōtiki)	8:00	5:25
Kutarere	8:15	5:45
Waimana (General Store)	8:30	-
Tūhoe Street (Tāneatua)	8:38	-
Pohutakawa Ave (Ōhope Shops)	-	6:00
Whakatāne Hospital	8:50	-
Quay Street – Info Centre	9:15	6:15
Boon Street – Fronting No.32	9:20	6:20

150 Pōtaka to Ōpōtiki

Tuesday & Thursday (except public holidays)

AM	
Pōtaka (School)	8:15
Whangaparāoa (Marae)	8:30
Oruaiti Beach (Motorcamp)	8:35
Waihau Bay (Store)	8:40
Raukōkore (Marae)	8:45
Papatea (Roadside)	8:50
Whanarua Bay (Homestay)	9:00
Arrive Te Kaha (Schoolhouse Bay)	9:15
Depart Te Kaha (Holiday Park)	9:20
Waiōrore (Marae)	9:25
Ōmaio (Store)	9:30
Whitianga (Marae)	9:35
Maraenui (School)	9:40
Hāwai (Marae)	9:55
Tōrere (Marae)	10:00
Ōpape (Motorcamp)	10:05
Tirohanga (Store)	10:10
Ōpōtiki - Hot Bread Shop, 43 St John St	10:15

PM	
Ōpōtiki – Hot Bread Shop, 43 St John St	2:45
Tirohanga (Store)	2:50
Ōpape (Motorcamp)	2:55
Tōrere (Marae)	3:00
Hāwai (Marae)	3:05
Maraenui (School)	3:20
Whitianga (Marae)	3:25
Ōmaio (Store)	3:30
Waiōrore (Marae)	3:35
Arrive Te Kaha (Holiday Park)	3:40
Depart Te Kaha (Schoolhouse Bay)	3:45
Whanarua Bay (Homestay)	4:00
Papatea (Roadside)	4:10
Raukōkore (Marae)	4:15
Waihau Bay (Store)	4:20
Oruaiti Beach (Motorcamp)	4:25
Whangaparāoa (Marae)	4:30
Pōtaka (School)	4:45